



Look on our website for an online
version: www.3xm.com.au

PREMIUM CANOPY FITTING INSTRUCTIONS TO SUIT

VW AMAROK 2012+

RECOMMENDATION: It is recommended that this canopy be installed by a certified fitter/mechanic and auto electrician.

Before installation, unpack and thoroughly inspect canopy to
Ensure it is free of damage and all parts are accounted for.

Canopy Preparation

1. Position canopy against a wall with the front window on the ground. Place something soft under the base and between the canopy roof and the wall to avoid damaging the canopy. You now have access to the underside of the canopy for preparation.
2. Check the underside of the canopy and ensure all edges are clean and free of dirt and/or grease.
3. With the edges of the canopy now clean, select the left rubber seal. Attach the rubber seal by starting at one end and pressing the seal into place at evenly spaced short distance intervals. Once complete, inspect the seal to ensure it is in place as required.
4. Repeat step 3 with the front (F) and the (R) sponge seals.



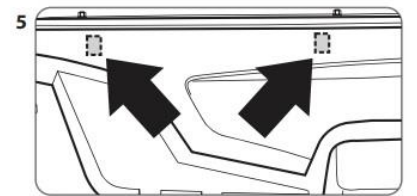
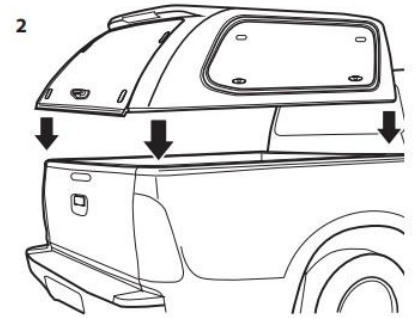
If your vehicle has a brake light mounted in the rear of the cabin, we suggest disconnection prior to avoid excessive light reflection. Speak with a authorised installer, or if installation is DIY, consult and auto-electrician before alerting any part of vehicles electric system.

PGSESVWA PGSELSVWA PGSELVWA PGSSXVWA PCMXVWA PCMXWVWA

Canopy Fitment

At this point in time is a good idea to inspect the clamp and understand how it is secure the canopy to the ute before proceeding.

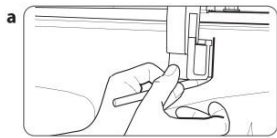
1. The ute tub should be clean and free of items to create an obstruction-free workspace. To prevent tools scratching the ute surface while working, cut a section of the cardboard from the packaging and lay this in the ute tub.
2. Lift the canopy and carefully place it onto the ute tub as pictured. This requires the assistance of a second person when lifting into place to avoid the possibility of personal injury or damage to the canopy.
3. Portion the wiring harness in a location so it may be easily routed and installed as required.
4. Check alignment to the vehicle; it should be even on both sides and adjusted if necessary.
5. Decide on the best position for the clamps and mark them with a pencil. Ideal placement will vary from vehicle to vehicle but where possible should be evenly spaced.



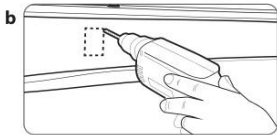
For vehicle with a tub liner,
proceed to step 6.

For vehicle without a tub liner,
proceed to step 7.

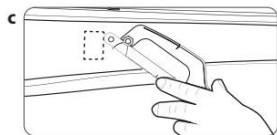
6. For vehicle with a tub liner, a small section must be cut out to allow the clamp to reach the ute tub wall. To prepare your tub liner appropriately, follow these steps



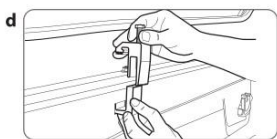
- a. Trace around the bottom section of the clamp – This the section of the tub liner that is to be removed.



- b. Drill a hole In the corner of the traced section to act an entry point for cutting.



- c. Use a cutting tool to remove the section and finish up by filling down any sharp edges.



- d. Check clamp will now attach to ute tub without obstruction and adjust if necessary. Repeat for all other clamp position.

7. Inside the side canopy rails are 3 threaded brackets, locate these brackets with the holes with in the clamps, Loosen the bolt within the clamp and slide the bottom part of the clamp under the lip of the tub, locate the top of the clamp on to the side rear of the canopy, using the pan head screws supply screw through the clamp in to bracket to stop the clamp coming away from the canopy now tighten the clamp finger tight using a 10mm spanner on the bolt – Do this to the three clamps on each side.

8. Check canopy is still evenly aligned and adjust if needed.

9. Tighten clamps to secure canopy to ute tube. Do not use excessive force as this could damage the canopy.

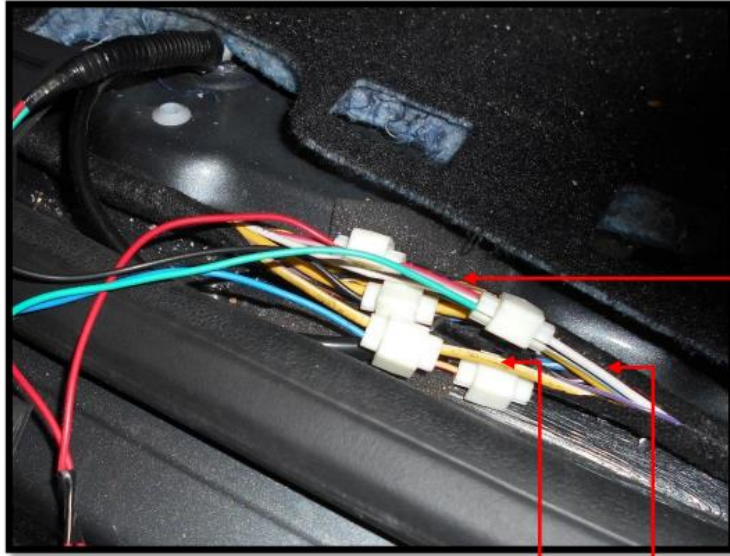
10. See Below:

FUNCTION	CANOPY WIRING	VEHICLE WIRING
Constant Power (Dome Light)	Red	Positive Terminal on Battery
Central Locking (Lock)	Brown	Yellow/White
Central Locking (Unlock)	White	White
Earth	Black	Body of the car
Brake Light	Yellow	Brake wire in rear tub light



- The wiring connections for Central Locking and Constant Power are located at the front of the vehicle on the passenger side underneath the floor kick panel.
- Plug A Connection is done behind the tail light on the driver's side.
- Make sure you leave enough length on the loom to reach from the front on the passenger side to behind the taillight on the driver's side.

Front Floor Kick Panel



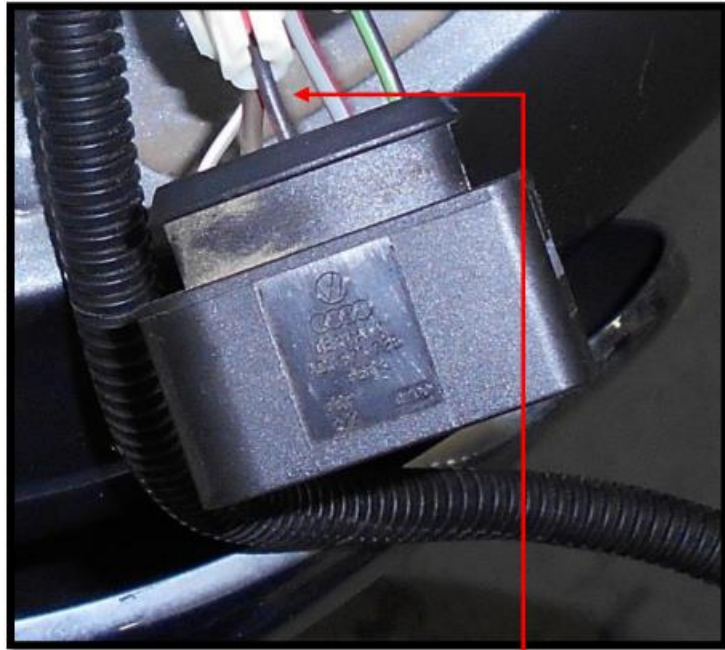
Brown to Yellow/White (Central Locking- Lock)

White to White (Central Locking- Unlock)

Black (Earth) to Body of the car (Ground)

Red to Red/White OR Red/Green (Constant Power/Dome Lamp) – depend on the vehicle wiring (use test light to check if not sure)

Plug A



Yellow to Black/Red (Rear Brake Light)

Black to Body of the car (Ground)

Running the loom.

You will find an opening with a grommet sealing it on the floor at the front on the passenger side. Then run the loom through the hole to the rear of the vehicle behind the tail light on the driver's side.



PLEASE NOTE

- Avoid drilling holes in the vehicle. There are always openings into the cabin underneath the vehicle or at the rear.
- Using a L.E.D test light, test all electrical components of the vehicle before and after wiring the canopy to ensure that everything works correctly.
- Ensure you replace all vehicle trim and return the vehicle interior back to how it was found.

11. Check all wiring is working, clean canopy down and add scuff tape to the rear door of the ute to stop the rubbing of the rear door on to the paint.