



## **FITITNG INSTRUCTIONS FOR INSTALLING 3XM TRAYBACK SERIES CANOPIES**

### **107CKA004**

1. It will be necessary to fit an aluminum angle across the front of the tray. The top of the angle must be in line with the top of the dropsides of the tray. Predrill five (5) (4.8mm) diameter holes through the angle into the tray evenly spaced and in an appropriate position to suit the vehicle. It will be necessary to seal the angle against the loading board to prevent water leakage. Seal this with a bead of silicone. Secure using the supplied rivets.



### **FITITNG THE CANOPY**

2. Attach the saddle clamps to the inner edge of the tray lip using pop rivets as illustrated. Ensure all clamps are level with the top of the tray. For Dual Cab vehicles, use three saddle clamps on each side for Dual Cab and Extra Cab and four saddle clamps for Single Cabs. Use a tape measure to check the appropriate positioning of the saddle clamps.



**3. To secure the dropsides, connect the steel bracket supplied. Connect the bracket to the tray floor using the supplied bolts, flat washers and nyloc nuts, then connect the top of the bracket to the top inside edge of the tray sides at the rear of the tray using the supplied pop rivets.**

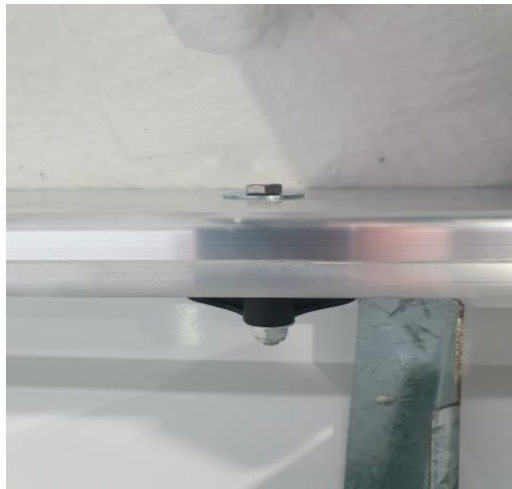


**4. Place the canopy on the tray or body making sure it is square across the front and down each side. Check that the door gap down each side is minimal and even. To achieve this, it may be necessary to use a clamp or jig bar to hold the canopy parallel.**

**5. Mark the position if the saddle clamps on the underside of the canopy rails. Remove the canopy from the tray and drill holes through the canopy base rails and channel in the positions marked.**

**6. Using the sealing tape provided, install one layer of tape across the front section where the loading board was removed and one layer down each side of the tray or tub with the adhesive side to the tray.**

**7. Position the canopy on the tub and use the supplied bolts, washers and nyloc nuts to fasten through the saddle clamps and pre- drilled holes in the base rails. Check the alignment and locking bars of the rear tailgate, then tighten the bolts. Do not over tighten or you will crush the base rail.**



**8. The interior light on this canopy is battery powered and takes 3 x AAA batteries (supplied). The wiring for the brake light is positioned on the left hand side of the canopy. Run the wires out of the tray, you may need to drill a small hole for this, then conseal the wire in conduit. Connect the positive wire from the brake light to the brake light wire on the rear light of the vehicle and earth out the negative on the body.**



9. Check brake light and interior lights are working. Check all windows open and close, and check the rear door opens and closes correctly.

