



## **FITTING INSTRUCTIONS TO SUIT DODGE RAM BOX CANOPIES**

- 1. YOU WILL NEED A LONG EXTENSION BAR SOCKET.**
- 2. TAPE UP THE REAR HIGH LEVEL STOP LIGHT ON THE BACK OF THE CAR WITH BLACK TAPE – DO NOT UNPLUG – IT WILL CAUSE COMPUTER ISSUES.**
- 3. ENSURE TO KEEP THE PLASTIC TRIMS ON THE TOP OF THE TUB.**
- 4. CLEAN THE TOP OF THE TUB SIDES TO REMOVE ANY DIRT OR GRIME. STICK TWO ROWS OF FOAM TAPE ON EACH CORNER OF THE TUB WHERE THE CANOPY WILL SIT (AS PER PICTURES BELOW) AND ONE ROW OF FOAM TAPE ALONG THE FRONT EDGE OF THE TUB.**



**FRONT CORNERS OF TUB**



**REAR CORNERS OF TUB**



**FRONT EDGE OF TUB**

**(If there are any gaps in the front corners of the tub, make sure you seal them with a sealant before you fit the canopy to prevent any water leaks.)**

- 5. PLACE THE CANOPY ONTO THE TUB BODY, ENSURING THE CANOPY IS SITTING SQUARE AND THE REAR DOOR CLOSURES CORRECTLY. THE CANOPY SHOULD SIT INLINE WITH THE END OF THE TUB AT THE FRONT. LINE UP THE CANOPY AND ENSURE THE SIDE DOOR GAPS ARE EVEN AND THE RAM BOX LIDS OPEN FULLY.**



- 6. DRILL THROUGH THE WELDED PLATES (YOU WILL SEE THE COVERED HOLE). DRILL THROUGH THESE HOLES AND THROUGH THE TUB BODY.**



- 7. REMOVE THE REAR TAIL LIGHTS, THEN USING THE LONG BOOKER ROD AND WASHER, BOLT THROUGH THE CANOPY AND THROUGH THE HOLE PICTURED BELOW. THEN BOLT DOWN THE REAR OF THE CANOPY.**



**REMOVE LIGHT**



**HOLE IN LIGHT CAVITY**



**HOLE IN LIGHT CAVITY ONCE  
CANOPY IS BOLTED DOWN**

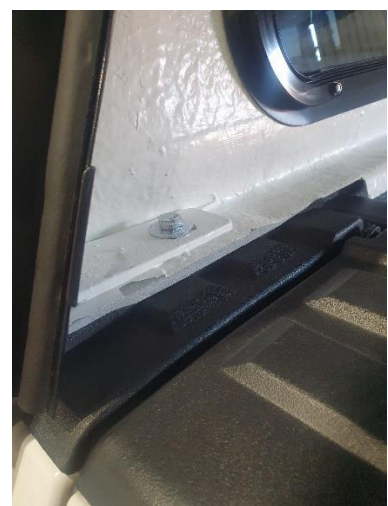
- 8. USING THE SMALLER BOLTS, BOLT DOWN THE FRONT OF THE CANOPY. YOU WILL THEN NEED AN EXTENSION SOCKET TO GO UP UNDERNEATH THE TUB IN FRONT OF THE WHEEL ARCH. PLACE THE BOLT IN THE HOLE INSIDE THE CANOPY, THEN GO UP UNDER THE BODY AND PLACE THE WASHER AND NUT ON THE BOLT. USING THE EXTENSION ARM, LIGHTLY TIGHTEN THE NUT FROM BELOW. RECHECK THE CANOPY IS SQUARE AND THEN TIGHTEN ALL BOLTS.**



**EXTENSION BAR SOCKET**



**UP UNDER THE BODY IN FRONT  
OF THE FUEL FILLER**



**BOLT DOWN FROM TOP OF  
CANOPY**



**THIS IS THE NUT LOCATION FROM UP UNDER THE BODY ONCE THE BOLT IS CONNECTED**

- 9. THE WIRING PLUG IS LOCATED ON THE LEFT HAND REAR OF THE CANOPY, INSIDE, NEXT TO THE REAR DOOR..**

**12V POWER- RED WIRE**

**EARTH – BLACK OR WHITE**

**STOPLIGHT – BROWN**

**LOCK – GREEN**

**UNLOCK – BLUE OR YELLOW**

#### **BRAKE LIGHT**

**RUN THE BROWN WIRE TO THE BRAKE LIGHT WIRE, ON THE TUB REAR LIGHT (RED ON 2018 AND PREVIOUS MODELS OR GREEN ON 2019 ONWARDS). FUSE THE WIRE AND THEN CONNECT THE WIRE USING THE PURPLE SPLICE CONNECTOR AND MALE SPADE CONNECTOR.**

#### **INTERIOR LIGHT**

**USING 5.5M OF THE SUPPLIED 2 CORE WIRE, JOIN TO THE RED WIRE AND EARTH THE WIRE FROM THE CANOPY. RUN THIS WIRE THROUGH THE CHASSIS TO THE BATTERY. USING THE FUSE CONNECTOR, FUSE THE POSITIVE WIRE AND ADD THE RING TERMINAL. CONNECT THE POSITIVE WIRE TO THE BATTERY, THEN ADD THE RING TERMINAL TO THE EARTH WIRE. EARTH THIS TO THE BODY OR TO THE NEGATIVE ON THE BATTERY.**

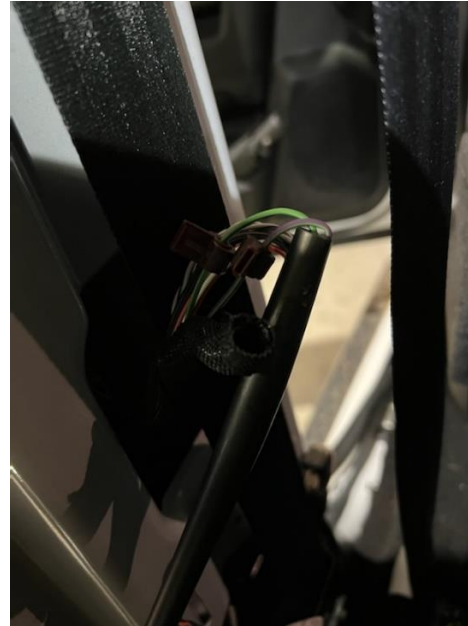


### **CENTRAL LOCKING IF APPLICABLE**

USING THE LEFTOVER WIRING, USE THE SOLDER SPLICES TO JOIN THIS WIRE TO THE CENTRAL LOCKING WIRES OF THE CANOPY. RUN THE WIRING THROUGH THE CHASSIS TO THE CLOSEST EXIT HOLE NEAREST THE PASSENGER SIDE REAR DOOR. OPEN THE PASSENGER SIDE DOOR, UNCLIP THE B PILLAR COVER PLATES AND EXPOSE THE WIRING. YOU WILL NEED TO DRILL A HOLE IN THE FLOOR OF THE VEHICLE TO ALLOW THE WIRING TO COME INSIDE. ONCE YOU HAVE FINISHED WIRING, YOU WILL NEED TO SEAL THIS HOLE USING SIKAFLEX OR SILICON. CONNECT THE TWO MALE SPADE CONNECTORS TO THE ENDS OF THE CENTRAL LOCKING WIRES, THEN CONNECT THE PURPLE SPICE CONNECTORS TO THE CENTRAL LOCKING WIRES OF THE CAR (PICTURED BELOW).



**RUN WIRE FROM CHASSIS INTO VEHICLE FLOOR**



**CLIP THE PURPLE CONNECTORS TO THE PURPLE AND GREEN TRACE FOR THE UNLOCK, AND THE GREEN AND DARK GREEN FOR THE FOR THE LOCK.**

- 11. USE ANY TYPE OF ACCESS FOAM SEAL TO FILL ANY UNEVEN GAPS WITH THE CANOPY, ENSURING THE CANOPY IS SITTING SQUARE. CLEAN AWAY ANY EXCESS SEALANT OR SWARF. CHECK THE REAR DOOR CLOSES CORRECTLY, THEN CHECK THE BRAKE LIGHT AND INTERIOR LIGHT WORK CORRECTLY. CHECK THE CENTRAL LOCKING AND ALL KEYS ARE WORKING.**