



FITTING INSTRUCTIONS FOR INSTALLING 3XM SMOOTH CANOPIES

TOOLS REQUIRED

- Cordless drill with an 8mm drill bit
- Waterproof sealant
- 5mm Allen key
- 13mm Spanner
- Pliers
- Box cutter/knife

1. If required Remove the load board or sports bars from the vehicle ensuring that any of the raw surfaces are treated to prevent rusting.

2. If there are any gaps in the front corners of the tub make sure you seal them with a sealant before you fit the canopy to prevent any water leaks.

3. Measure the closest distance to the front and back of the vehicle tub, where you can successfully put a bolt through the vehicle rail. Record these measurements.

4. Run masking tape along each side of the tub, to protect it from scuffs.

5. Lift and place the canopy on the vehicle tub making sure it is square across the front and down each side. Check the gap down each side of the tailgate, it should be minimal and even. Check the rear door opens, closes and seals. To achieve this, it may be necessary to use a clamp. Ensure the canopy tailgate locks locate correctly.



6. Measure and record the gap between the tub rail and the inside lip of the canopy base rail on each side of the vehicle – these measurements should be similar on each side. Record the measurement.

7. Remove the canopy and stand it in an upright position, ensuring it is stable.

Note: Mazda Bt50 and Ford Ranger canopies have aluminum base rails.



8. Measure the width of the vehicle tub rail and find the centre point, so that when you drill through it, it will allow a bolt to go through and a nut to be fastened underneath. Record the distance from the inside of the vehicle tub rail to the centre point.

9. Use the measurement from the inside lip of the canopy base rail to the tub rail (from step 6), then add the measurement from step 8. Record this measurement. (Combined, these two measurements will give you the correct left-to-right location to mark on the canopy base rail.)

10. Now measure and mark the front and back measurements from step 3 on the canopy base rail. Double check you're matching the correct measurement with each end of the tub.

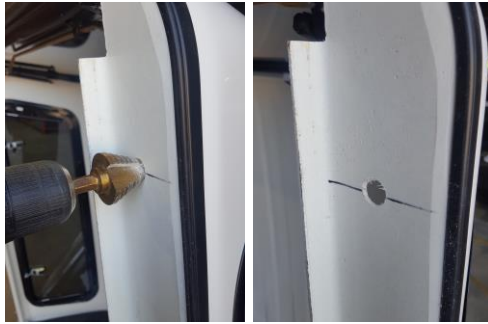
11. Next, add the measurement for the left-to-right position to the canopy base rail. Do this by measuring from the inside of the canopy base rail. This will ensure your marks will be located correctly over the tub rail when the canopy is re-installed.

12. You should now have two intersecting marks, one for the length measurement from the back or front of the tub, and one that gives you a left-to-right position.

13. Repeat for both sides of the canopy base rails. You should now have four marks – one at the front and one at the back of both base rails.

14. Mark a third hole on each canopy base rail at the centre point, between the two marks you've just made. (Use the same measurement from step 9 to ensure it will be located correctly over the tub rail when the canopy is re-installed).

15. Using an 8mm drill bit, drill a hole through each of the six intersecting marks. NOTE: Wear appropriate safety gear while using the drill.



16. When you are happy with the position of the canopy, scribe through the holes in the base rails of the canopy on top of the tub.

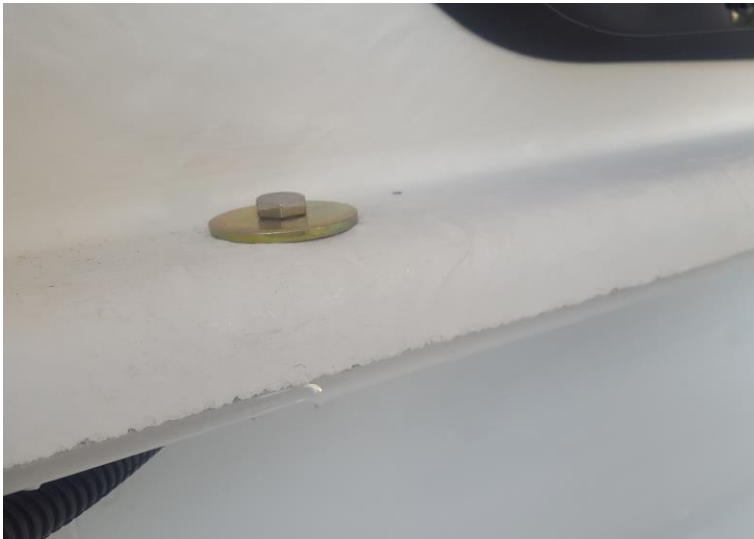
17. Remove the canopy and drill 6 x 8mm holes in the positions marked on the tub sides, deburr all holes and remove any excess metal to prevent rusting.

18. Fit one layer of single sided tape to each side of the tub and along the front where the head board was removed, including over the bolt holes (if the front sits lower than the sides, apply 2 rows of tape along the front section). Use a waterproof sealant between the tape joins. Pierce the tape to reveal the bolt holes, place the rubber washer over the holes and use the supplied Bostic or Sikaflex around the hole.



19. Refit the canopy, ensuring that all holes line up and the tailgate opens and closes. As before, secure it in place using the bolts, washers and Nyloc nuts supplied. Use the larger washer inside the canopy and the smaller washer under the vehicle side rail. Finger tighten the fixings to start with. Check everything is in place and square, then tighten all bolts.

Do not over tighten or crush the base rail.



20. Place the scuff tape provided along the top edge of the vehicles' tailgate where the canopy rear door rubber closes on to. This prevents the canopy rear door rubbing off the paint on the vehicle.



21. Locate the brake light wire from the canopy. In most cases the wire can be fed in to the rear light cavity on the vehicle via an open hole, or in some cases drilling a hole in the tub to access this area maybe required. Feed the wire into the rear light cavity using the split conduit supplied.

22. Remove the rear tail light from the vehicle. Locate the brake light wires on the vehicle and connect both + and – of the canopy brake light wires to the vehicles' brake light wires using the splice connector and fuse holder supplied. Conceal the exposed wires with electrical tape, test brake light and refit rear light to vehicle.

Fit Kit Items:

| | |
|---------------------------------------------------------------------------------------|-------------------------------------|
| 6 x 8mm button head bolts | 6 x 8mm nyloc nuts |
| 6 x large 8mm washers | 6 x Small 8mm washers |
| 1 x Split conduit length | 1 x Roll of compression tape |
| 1 x Roll of anti scuff tape | 2 x Wire splice connectors |
| 6 x Rubber washers | 1 x Fuse holder and fuse |
| 5 x Self drilling screws (only needed for MN, MQ Triton and SR Hilux canopies) | |