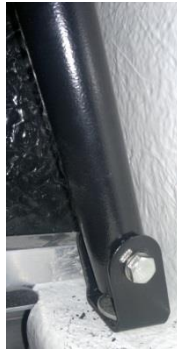


## INTERNAL SUPPORT ROOF RACKS

1. LOCATE THE **BASE RAIL FOOT (PICTURED)** BOLT THIS FOOT TO THE SIDE RAIL OF THE CANOPY IN THE BEST LOCATION FOR THE ROOF RACK



2. CONNECT THE BOTTOM UP RIGHT POLE TO THE BASE, AS PER THE PICTURE ABOVE, JUST LOOSELY TIGHTEN THE BOLTS TO STOP THEM FALLING
3. SLIDE THE CORNER SECTION IN TO THE BOTTOM UP RIGHT, SO IT IS THE CORRECT HEIGHT FOR THE CANOPY ROOF.
4. TIGHTEN UP THE BOLTS IN THE ROUNDED PART OF THE INTERNAL FOOT, TO TIGHTEN THE DISTANCE OF THE ROUNDED PART SO IT WILL SIT TIGHT ON THE BAR. THEN DISASSEMBLE THE TWO INTERNAL FEET FROM, AND SLIDE THE ROUNDED SECTION ON TO THE MAIN CROSS BAR.
5. ADD THE SECOND CORNER PIECE TO THE MAIN CROSS BAR, THEN THE BOTTOM UPRIGHT PIECE AND THEN THE OTHER BASE RAIL FOOT, BOLT THE OTHER BASE RAIL FOOT TO THE CANOPY BASE RAIL. THIS WILL GIVE YOU THE INTERNAL FRAME SETUP.



6. MOVE EVERYTHING INTO PLACE SO THE INTERNAL FEET ALL CORRECT DISTANCE APART AND ARE NOT IN THE MIDDLE OF A RIB IN THE ROOF.



7. MARK THE POSTIONING OF THE INTERNAL FOOT ON THE BAR, THEN SLIDE IN THE OTHER PART OF THE INTERNAL FOOT, WITH THE FOUR HOLES, THESE SHOULD SIT HARD AGAINST THE ROOF. ONCE IN PLACE AND HAPPY THAT BOTH FEET ARE EVEN, MARK THROUGH THE HOLES ON TO THE ROOF. SLIDE THE ROUNDED INTERNAL FOOT PART OUT OF THE WAY.
8. DRILL 4 HOLES THROUGH THE INTERNAL FOOT, USING A SEALANT AROUND THE HOLES, THEN ADD THE EXTERNAL FOOT ON THE CANOPY ROOF LINING UP WITH THE DRILLED HOLES. USE WEDGES IF REQUIRED TO CHANGE DIRECTION OF THE FOOT.



9. BOLT THROUGH THE INTERNAL FOOT FROM THE INSIDE WITH THE **THREAD AND NUTS ON THE OUTSIDE OF THE CANOPY**, DO THIS WITHOUT THE ROUNDED PART CONNECTED.
10. PLACE THE ROOF BAR ON THE FEET, MARK THROUGH THE HOLE IN THE FOOT AND DRILL THROUGH THE ROOF BAR, PLACE THE SQUARE THREADED UNIT, IN THE ROOF BAR AND TIGHTEN UP THE BOLT TO SECURE THE BAR, CHECKING BOTH SIDES ARE EVEN. ADD END CAPS AND RUBBER TOP.
11. ONCE BOTH FEET ARE BOLTED TO THE ROOF SLIDE THE ROUNDED INTERNAL FOOT BACK ON TO THE OTHER PART OF THE INTERNAL FOOT, AND PUT THE BOLTS THROUGH. THE ROUNDED PART OF THE FOOT MAY NEED TO SIT SLIGHTLY LOWER TO ALLOW THE BOLT TO GO IN AND NOT HIT THE OTHER BOLT.



12. TIGHTEN EVERYTHING UP AND THEN PUT IN THE SECURING BOLTS TO STOP ANY MOVEMENT.