



Look on our website for an online  
version: [www.3xm.com.au](http://www.3xm.com.au)

PGSX19A PCMX19A PCMXW19A

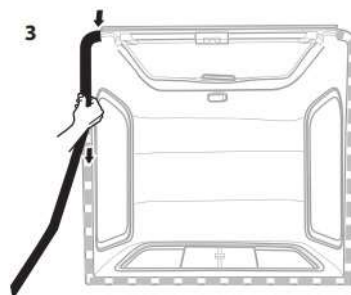
## PREMIUM CANOPY FITTING INSTRUCTIONS TO SUIT FORD RANGER 2022+ NEXT GEN

**RECOMMENDATION:** It is recommended that this canopy be installed by a certified fitter/mechanic and auto electrician.

Before installation, unpack and thoroughly inspect canopy to  
Ensure it is free of damage and all parts are accounted for.

### Canopy Preparation

1. Position canopy against a wall with the front window on the ground. Place something soft under the base and between the canopy roof and the wall to avoid damaging the canopy. You now have access to the underside of the canopy for preparation.
2. Check the underside of the canopy and ensure all edges are clean and free of dirt and/or grease.
3. With the edges of the canopy now clean, select the left rubber seal. Attach the rubber seal by starting at one end and pressing the seal into place at evenly spaced short distance intervals. Once complete, inspect the seal to ensure it is in place as required.
4. Repeat step 3 with the front (F) and the (R) sponge seals.



If your vehicle has a brake light mounted in the rear of the cabin, we suggest disconnection prior to avoid excessive light reflection. Speak with a authorised installer, or if installation is DIY, consult and auto-electrician before alerting any part of vehicles electric system.



## Internal Bracing Fitment

The ford ranger tub has been noted that some extra bracing is required, We have supplied a heavy duty internal brace that joins the front to the sides of the tub to give it more intergral strength, eliminating the need for the J Brace support due the light weight of the canopy. The J brace can be fitted if required (see Note at the end of fitting intructions)

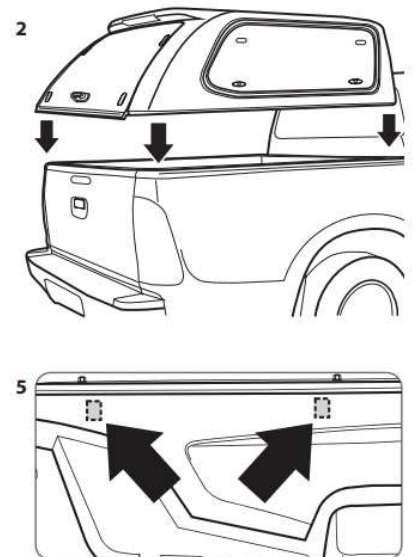
1. If the tub has a liner, you will be required to cut the liner to fit the bracket and also remove the sports bars if required. Trace the bracket on to the liner, to ge the correct cut. Once cut use the supplied pinch weld to cover the exposed edge. If no liner is present proceed to step 2.
2. Using the bolts in the tub add the bracing bracket to the front and sides of the tub as per the pictures.



## Canopy Fitment

At this point in time is a good idea to inspect the clamp and understand how it is secure the canopy to the ute before proceeding.

1. The ute tub should be clean and free of items to create and obstruction-free workspace. To prevent tools scratching the ute surface while working, cut a section of the cardboard from the packaging and lay this in ute tub.
2. Lift the canopy and carefully place onto the ute tub as pictured. This requires the assistance of a second person when lifting into place to avoid the possibility of personal injury or damage to canopy.
3. Portion the wiring harness in a location so it may be easily routed and installed as required.
4. Check alignment to vehicle is even on both sides and adjust if necessary.
5. Decide on the best position for the clamps and mark the are with a pencil. Ideal placement will vary from vehicle to vehicle but where possible should be evenly spaced.





6. Inside the side canopy rails are 3 threaded brackets, locate these brackets with the holes with in the clamps, Loosen the bolt within the clamp and slide the bottom part of the clamp under the lip of the tub, locate the top of the clamp on to the side rear of the canopy, using the pan head screws supply screw through the clamp in to bracket to stop the clamp coming away from the canopy now tighten the clamp finger tight using a 10mm spanner on the bolt – Do this to the three clamps on each side.

7. Check canopy is still evenly aligned and adjust if needed.

8. Tighten clamps to secure canopy to ute tube. Do not use excessive force as this could damage the canopy.

9. Place covers over clamps



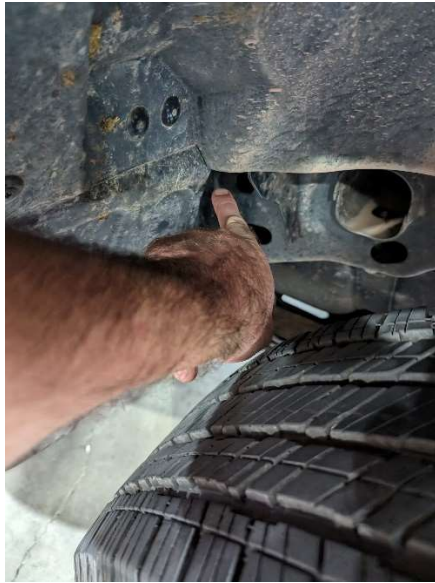
FUNCTION	CANOPY WIRING	VEHICLE WIRING
Constant Power (Dome Light)	Red	Positive Terminal on Battery
Central Locking (Lock)	Brown	White
Central Locking (Unlock)	White	Blue
Earth	Black	Body of the car

Run the wiring loom along the inside of the canopy under the side lip, (this saves removing the tub lights as they have very sensitive sensors in them) run the wires to the front end of the tub, there is a hole in the corner, run the harness out of this hole.



Under the car split the harness, run the power and earth to the engine bay and connect to the battery and earth to the body. Run the central locking wiring to the underside of the passenger side wheel arch. You will find 2 wires from behind the fuel filler, a blue and white wire, these are the central locking wires. Connect the lock and unlock to these two wires, and cover with split conduit. The yellow wire is not needed.





11. Check all wiring is working, clean canopy down

### **PLEASE NOTE**

- Avoid drilling holes in the vehicle. There are always openings into the cabin underneath the vehicle or at the rear.
- Using a L.E.D test light, test all electrical components of the vehicle before and after wiring the canopy to ensure that everything works correctly.
- Ensure you replace all vehicle trim and return the vehicle interior back to how it was found.

**PLEASE NOTE – As Per the Ford Warranty Policy there maybe a requirement to fit load box reinforcement brackets when fitting canopies to Next-Gen Ranger vehicles from 2022MY this is to support the structural integrity of the load box when a canopy is fitted, Ford recommends the installation of load box reinforcement brackets (J Braces). These braces are available from your local ford dealer.**